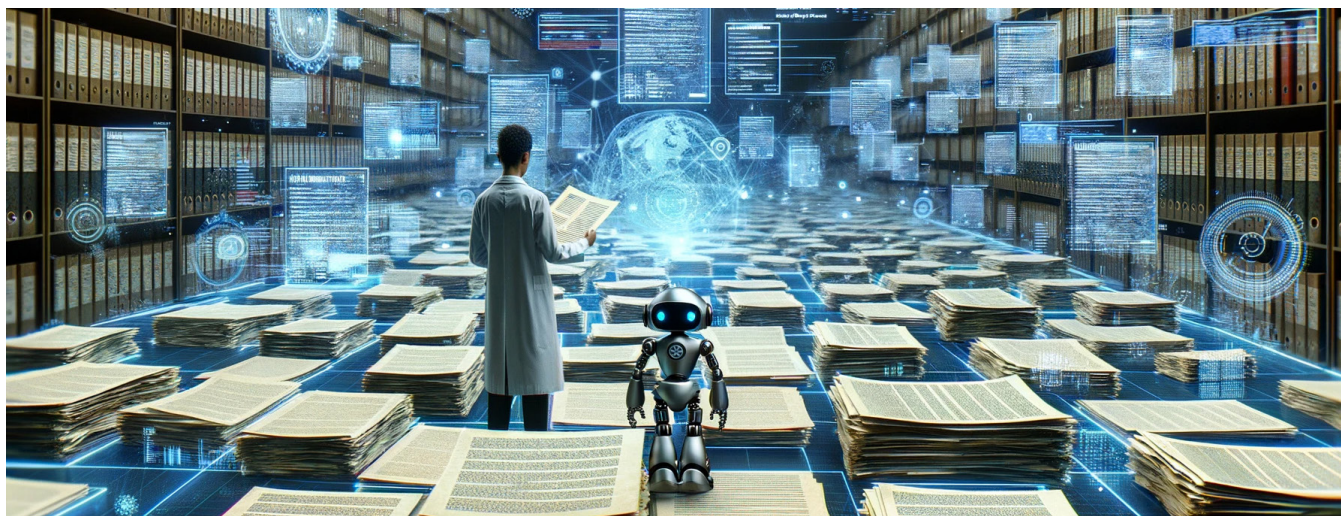


Unlocking the Hidden Value in Your Documents with fme's MetadataAssistSM



Leveraging AI and NLP to add value to your content

MetadataAssistSM, developed by FME, introduces a groundbreaking approach to managing Life Sciences R&D information, including Regulatory, Quality, and Clinical data. In the Life Sciences industry, maintaining the integrity and accessibility of this critical information is paramount. MetadataAssist streamlines the flow of data from external sources into centralized systems, ensuring accurate and efficient integration. This automation significantly reduces manual errors and complexities, enhancing data standardization and compliance with regulatory standards. By optimizing data management processes, MetadataAssist accelerates R&D timelines while upholding the highest standards of data quality and compliance, marking a significant advancement in R&D information management.

MetadataAssist not only facilitates the integration of information from external sources but also plays a crucial role in enhancing data already within your enterprise content management system. It addresses issues like missing essential metadata from previous migrations or content not fully searchable due to inadequate attributes. This capability ensures that all your data, irrespective of its origin, becomes more accessible and usable, significantly improving the efficiency of data management and utilization within your organization.

MetadataAssist Quickfacts

MetadataAssist is an AI and NLP-powered tool that transforms PDF data into actionable insights. It enhances searchability, seamlessly integrates external data, enriches existing content metadata, and ensures regulatory compliance. Ideal for Life Sciences R&D, MetadataAssist streamlines data management, making it indispensable for efficient and reliable information handling.

The Challenge

In the fast-paced environment of Life Sciences R&D, managing vast amounts of data with precision and efficiency is a significant challenge. While versatile and widely used, PDFs pose a significant challenge: they are often treated as 'pictures' of documents, making extracting and analyzing their content a daunting task. This leads to a situation where valuable information is hidden in plain sight, inaccessible for further processing or analysis. Businesses struggle to utilize this data, leading to inefficiencies and lost opportunities. The complexity is compounded when data from past migrations lacks crucial metadata, rendering valuable information under-utilized and not fully searchable.

The Solution

MetadataAssist addresses these pain points by delivering a solution that not only integrates external data seamlessly but also revitalizes existing information within enterprise content management systems. This dual capability is essential for organizations looking to enhance data accessibility, improve decision making, and ensure regulatory compliance. By transforming unstructured data into actionable insights, MetadataAssist empowers clients to leverage their entire data repository effectively, making it an indispensable tool in the realm of Life Sciences R&D.

MetadataAssist revolutionizes data management by employing guided artificial intelligence (AI) and natural language processing (NLP) to deeply analyze and extract valuable information from PDF documents. This advanced approach enables the tool to understand the context and structure of data, transforming inaccessible content into actionable insights. Additionally, MetadataAssist enhances the searchability and accessibility of previously locked data, significantly streamlining the process of locating specific information within extensive document collections. This solution not only optimizes data utilization but also elevates the overall efficiency of managing Life Sciences R&D information.

Our Offering

The fine MetadataAssist offering presents a structured and efficient process flow designed to streamline the classification and management of content for organizations. At the core of this offering is the Classification stage, where MetadataAssist, an AI-driven utility, plays a pivotal role by interrogating document content, folder paths, and file names to derive metadata automatically. This stage is crucial for organizations dealing with vast amounts of unstructured data, as it provides a scalable and efficient approach to organizing and making sense of data that otherwise lacks the necessary metadata for effective searchability and accessibility.

Following the Classification stage, a Mapping Specification is created, which involves adding metadata and preparing migration inputs, setting the stage for a seamless migration process.

The subsequent stages in the process flow, Migrate and Verify, ensure that the classified content is accurately migrated and stored in the target solutions. The Migrate stage involves configuring migration tools and transferring the content. In contrast, the Verify stage ensures that the source documents are stored correctly in the target solutions, with a comprehensive documentation of results. This end-to-end process flow, from Classification to Verification, underscores the compre-

Benefits

- ✓ Enhances data searchability and accessibility, making it easy to locate specific information within documents.
- ✓ Utilizes AI and NLP for deep content analysis, extracting and interpreting data for actionable insights.
- ✓ Streamlines data integration from external sources into enterprise systems, improving efficiency.
- ✓ Corrects and enriches metadata in existing content management systems, enhancing data usability.
- ✓ Facilitates compliance with regulatory standards by ensuring data integrity and standardization.

hensive nature of the fine MetadataAssist offering, providing organizations with a robust solution for managing their data more effectively. By automating and streamlining the data classification and migration process, MetadataAssist enables organizations to enhance the accessibility and utility of their data, ultimately leading to more informed decision making and efficient operations.

For Further Information

Our capabilities, experience and know-how allow us to provide high-quality end-to-end solutions supporting our clients' using the leading Content Services and ECM platforms. We offer a coordinated catalog of Business Consulting, Technology Services and Migration Services designed, refined, and optimized to reduce system TCO and increase solution ROI.

Contact our experts today to discuss your current requirements and start a clear plan to success.

In Europe

www.fme.de | +49 531 238540 | info@fme.de

In North America

www.fme-us.com | +1 475 476 3118 | info@fme-us.com